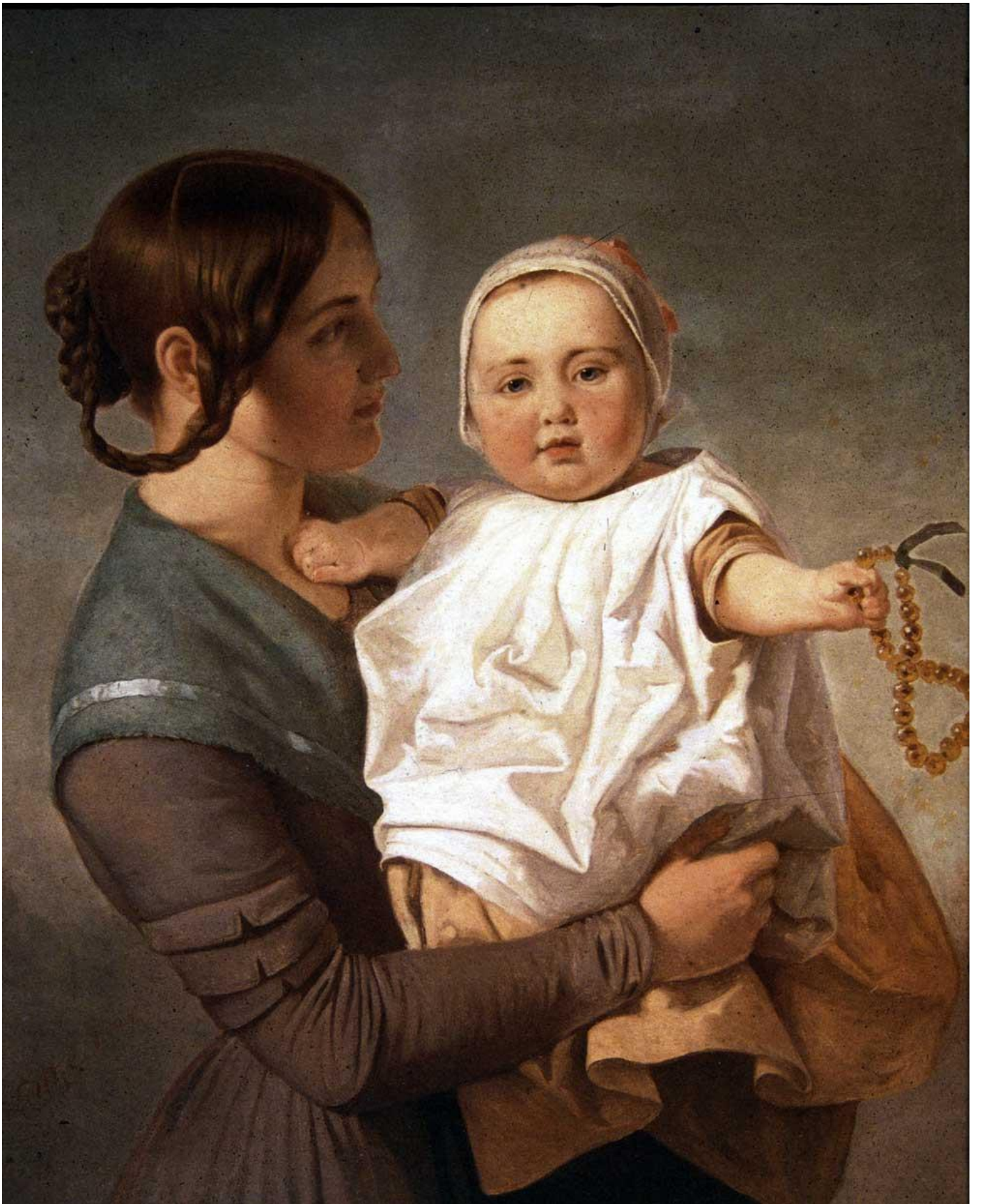


*Nathaniel Hawthorne by Emanuel Leutze 1862
Smithsonian Institution, Washington D.C.*



*The Amber Necklace by Emanuel Leutze 1847
Museum u. Galerie im Prediger, Germany*



*Washington Crossing the Delaware by Emanuel Leutze 1851
Metropolitan Museum of Art, New York City*



Westward the Course of Empire Takes Its Way by Emanuel Leutze 1861
United States Capitol, Washington, D.C.



*Washington Rallying the Troops at Monmouth by Emanuel Leutze 1853
Roger W. Heyns Reading Room, UC Berkeley Library, Berkeley, California*



Mrs. Schuyler Burning Her Wheat Fields on the Approach of the British by Emanuel Leutze 1852
Los Angeles County Museum of Art, Los Angeles, California